

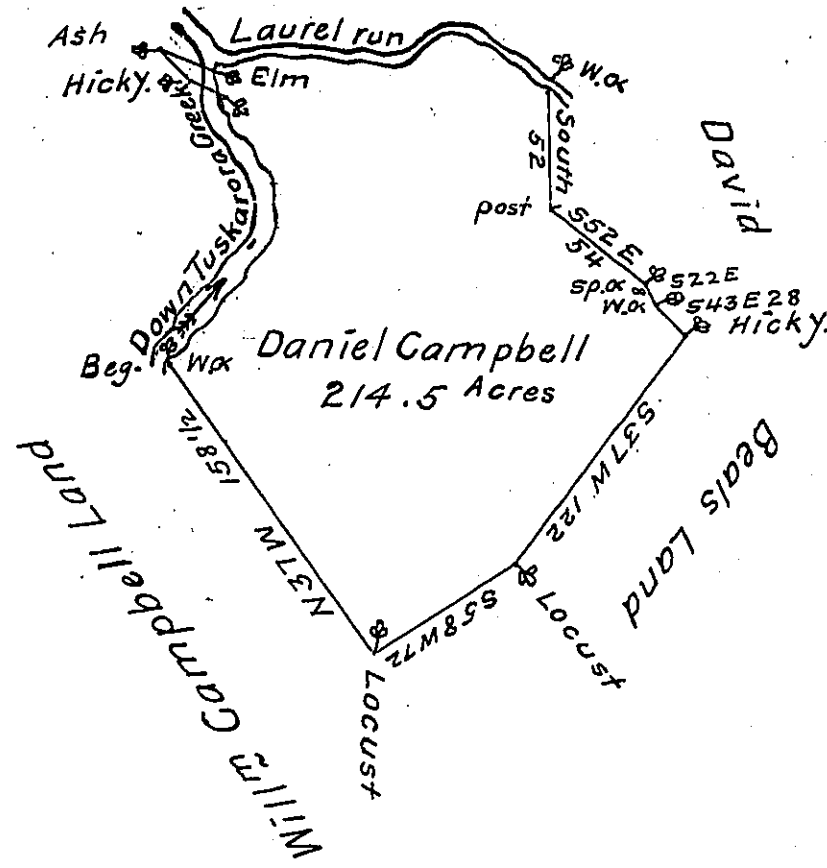
Courses & Dist^{ce}.
down Tuscarora Creek

- N 37 E 14.
- N 47 E 23.
- N 25 E 13
- N 38 E 28
- N 18 E 11
- N 32 W 50

Cross the Creek

- N 63 W 20
- N 44 W 18
- S 67 E 28 to the
mouth of Laurel run

- N 67 E 19
- East 70
- N 40 E 14
- S 87 E 14
- S 60 E 40 to a W^ox.



A Draught of a Tract of land Situate in Lack Township Cum-
berland County containing two hundred fourteen Acres five
tenths & the Usual allowance of Six p^{ct} Cent for roads &c Surveyed
for Daniel Campbell July 9th 1788 in pursuance of an Application
N^o 5112 Dated July 19th 1768 ~

To John Lukens Esq^r } of Sam^l Lyon D.S.
Surveyor General. }

IN TESTIMONY that the above is a copy of the original remaining on file in
the Department of Internal Affairs of Pennsylvania, made
conformably to an Act of Assembly approved the 16th day of
February, 1833, I have hereunto set my Hand and caused
the Seal of said Department to be affixed at Harrisburg,
this twentieth day of September 1904

George P. Brown
Secretary of Internal Affairs.